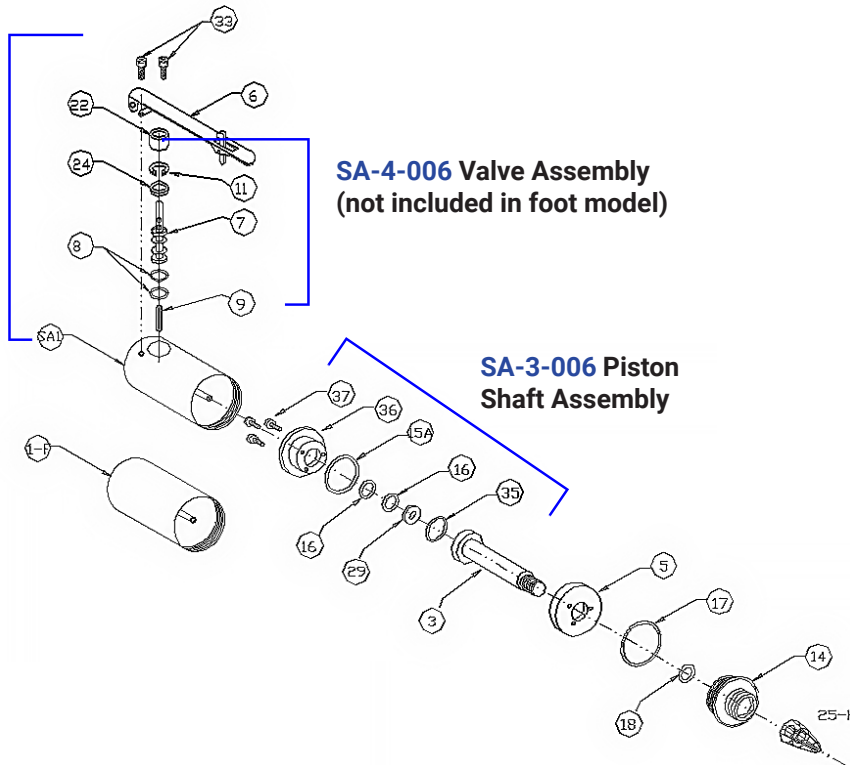




SP-006 | SP-006F Power Pack

**SA-1-006
Piston
Housing
Assembly**



**SA-4-006 Valve Assembly
(not included in foot model)**

**SA-3-006 Piston
Shaft
Assembly**

(1) Included in the valve repair kit.

- Optional Cams available, for use with special tools: 25-C-800, 25-F, 25-S, 25-R, 25-C
- Two hoses included with FOOT models, one with HAND models

| | | | |
|------|-----------------------------|-----------------|---|
| SA-1 | Piston Housing Assembly | SA-1-006 | |
| 1-F | Piston Housing Remote | 1-F-006 | |
| 3 | Piston Shaft | 3-006 | |
| 5 | Piston Lock Plate | 5-006 | |
| 6 | Safety Lever Assembly | DA-1 | |
| 7 | Spool | 7-006 | 1 |
| 8 | 2 Spool O-rings (Kit of 10) | 16-006-K10 | 1 |
| 9 | Spool Spring | 9A-01 | 1 |
| 11 | Snap Ring | 11-01 | 1 |
| 14 | End Cap | 14-006 | |
| 15A | O-ring Piston Seal | 15A-006 | |
| 16 | 2 O-rings (Kit of 10) | 16-003-K10 | |
| 17 | O-ring (Kit of 10) | 17-008-K10 | |
| 18 | O-ring | 18-01 | |
| 22 | Valve Spacer | 22-006 | 1 |
| 24 | Valve Washer | 24-006 | 1 |
| 25-H | Hex Cam | 25-H | |
| 29 | Valve Washer | 24-01 | |
| 33 | 2 Screws (Kit of 10) | 28-01-K10 | |
| 35 | O-ring (Kit of 10) | 35-003-K10 | |
| 36 | Piston Seal Holder | 36-006 | |
| 37 | 3 Mount Screws (Kit of 10) | 37-003-K10 | |
| | VALVE REPAIR KIT | SA-4-006 | |