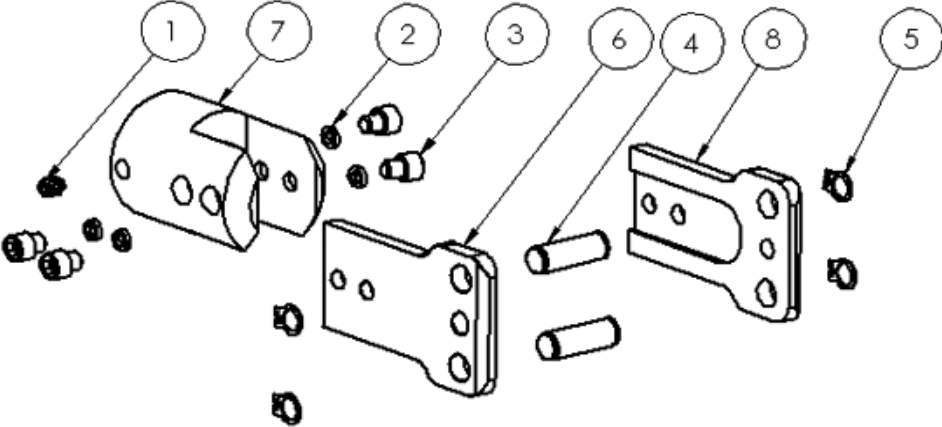




SA-2-4B Jaw Housing



1	Set Screw	4-3A
2	Lock Washer (4 required)	4-10A
3	Jaw Assembly Screw (4 required)	4-24A
4	Pivot Pin (2 required)	4-9A
5	Snap Ring (4 required)	4-7A
6 & 8	Side Plate (set of 2)	4-30A
7	Jaw Housing for A-4 Jaws	4-2B

PowerPacks require either a 25A or a 25R Cam only