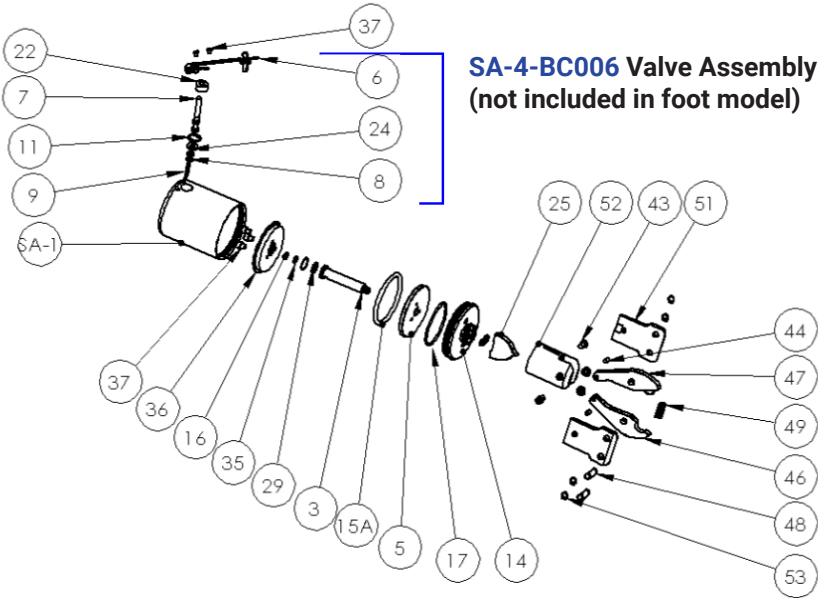




# BC-006 Ball Crimp Tool



SA-1	Piston Housing	SA-1-006-RV	
3	Piston Shaft	3-006-BC	
5	Piston Lock Plate	5-006	
6	Safety Lever Assembly	DA-1	
7	Spool	7-006	1
8	Spool O-ring (2 required)	16-006-K10	1
9	Spool Spring	9A-01	1

11	Snap Ring	11-01	1
14	End Cap	BC-14-006	
15A	O-ring Piston Seal	15A-006	
16	O-ring (2 required)	16-006-K10	
17	O-ring	17-006-K10	
18	O-ring	18-01	
22	Valve Spacer	22-006	
24	Valve Washer	24-01	1
25	Cam	BC-6	
29	Valve Washer	24-01	
33	Screw (2 required)	28-01-K10	
35	O-ring	35-006-K10	
36	Piston Seal Holder	36-006	
37	Mount Screw (3 required)	37-006-K10	
43	Side Plate Mount Screw	4-24A	
44	Roll Pin (2 required)	3-20-K2	
45	Roller (2 required)	3-19-420-K2	
46	Bottom Jaw (with pocket curve)	RBC-3L	
47	Top Jaw (with crimp ball)	RBC-3R	
48	Pivot Pin (2 required)	BC-23A-1	
49	Internal Jaw Spring	4-8A	
51	Side Plates (2 required)	BC-30-K2	
52	Jaw Housing	BC-2	
53	Snap Rings (4 required)	BC-7A	
	Valve Repair Kit	SA-4-BC006	

(1) Included in the valve repair kit.  
 • Two hoses included with FOOT models, one with HAND models